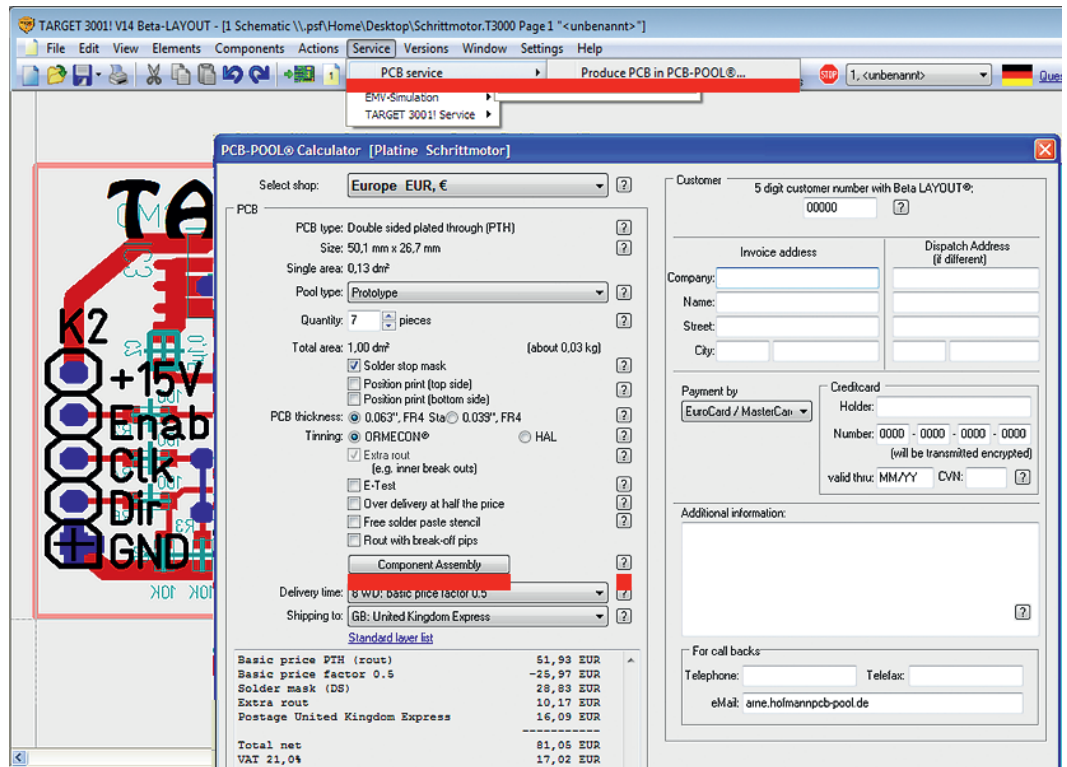


# Component assembly from Beta LAYOUT



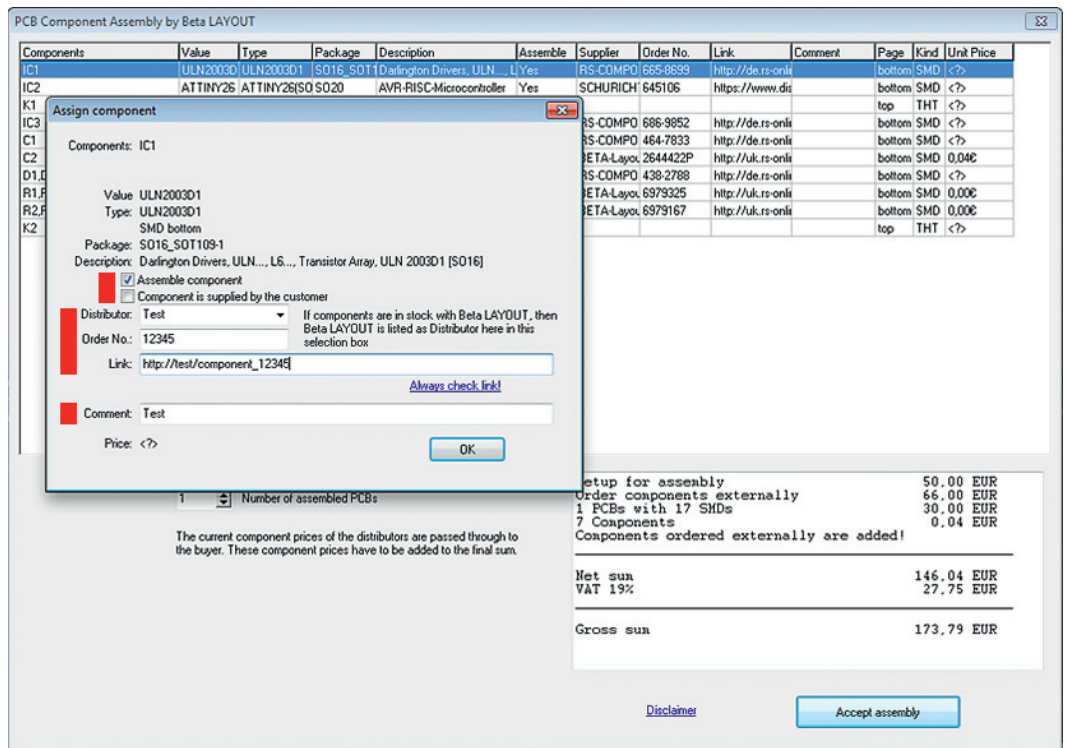
www.beta-layout.com

The configuration will be illustrated by the example "Stepper Motor" with the available Beta Layout components from the Target Demolibrary.



1 Pick the point -> Service -> PCB service -> Produce PCB-Pool in the Target3001! Menu

Please click on the button [Component Assembly] after configuring your pcb according to your wishes. Please take note of our hints regarding the mounting of pcs and the delivery of components. For this purpose click on the interrogation mark on the right side of the button [Component Assembly].



2 Open the line of a displayed component via double-click. Please fill in the corresponding box with the required information.

PCB Component Assembly by Beta LAYOUT

Components	Value	Type	Package	Description	Assemble	Supplier	Order No.	Link	Comment	Page	Kind	Unit Price
IC1	ULN2003D	ULN2003D1	S016_S0T1	Darlington Drivers, ULN...	Yes	RS-COMPO	665-8699	http://de.rs-onli			bottom SMD	<?>
IC2	ATTINY26	ATTINY26(S0	S020	AVR-RISC-Microcontroller	Yes	SCHURICH	645106	https://www.dcs			bottom SMD	<?>
K1	K1X10	K1X10	1X10	Plostensteckverbinder 10-pol	No						top	THT <?>
IC3	78L05_SMD	78L05_SMD	S08_S0T9	SMD-Spannungsregler; 780	Yes	RS-COMPO	686-9652	http://de.rs-onli			bottom SMD	<?>
C1	10µ	C_ELKD_10µf	2412_ELKD	Tantal-Elektrolyt-Kondensat	Yes	RS-COMPO	464-7833	http://de.rs-onli			bottom SMD	<?>
C2	0.1µ	C-SMD_0805_0805		SMD VS KONDENSATOR	Yes	BETA-Layo	2644422P	http://uk.rs-onli			bottom SMD	0,04€
D1,D2,D3,D4,D5,D6	LL4148	LL4148_DIN	MINIMELF_	Universal Diode SMD, 75V	Yes	RS-COMPO	438-2788	http://de.rs-onli			bottom SMD	<?>
R1,R3,R5	10K	R_SMD_10K_0603		SMD-Metallschichtwiderstar	Yes	BETA-Layo	6979325	http://uk.rs-onli			bottom SMD	0,00€
R2,R4,R6	100	R-SMD-MCT_0603		SMD WIDERSTAND 100R	Yes	BETA-Layo	6979167	http://uk.rs-onli			bottom SMD	0,00€
K2	K1X05	K1X05	1X05								top	THT <?>

Edit focused line  
 Selected lines: Customer supplies components  
 Selected lines: Do not assemble the components

1  Number of assembled PCBs

The current component prices of the distributors are passed through to the buyer. These component prices have to be added to the final sum.

Setup for assembly 50,00 EUR  
 Order components externally 66,00 EUR  
 1 PCBs with 17 SMDs 30,00 EUR  
 7 Components 0,04 EUR  
 Components ordered externally are added!

---

Net sum 146,04 EUR  
 VAT 19% 27,75 EUR

---

Gross sum 173,79 EUR

[Disclaimer](#)
[Accept assembly](#)

3

You can change the features of mounting at once by using the right mouse button. Below the listed components you will find an area, in which you fill in the desired number of pcbs you would like to be mounted. In the area at the bottom on the right the cost of mounting will be displayed. Please note that a part of the components costs will probably not be displayed if they cannot be calculated automatically. With the Button [Accept assembly] the selected options of mounting will be transferred into the calculation of your ordered pcb.

**Please note: We can only accept distributors with an on-line ordering facility (shopping basket) and EURO currency.**

**Congratulations – you are done!**

**Use this file to order your assembly service from Beta LAYOUT.**



GmbH  
 PCB-POOL®  
 Im Aartal 14  
 65326 Aarbergen